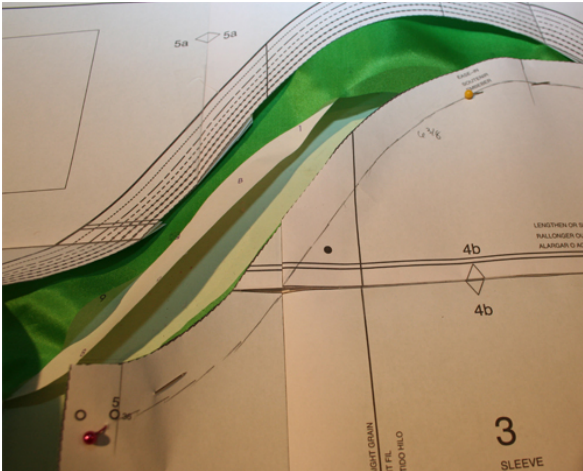


Cut Slippery Fabric

By: BurdaStyle

<http://www.burdastyle.com/techniques/cut-slippery-fabric>



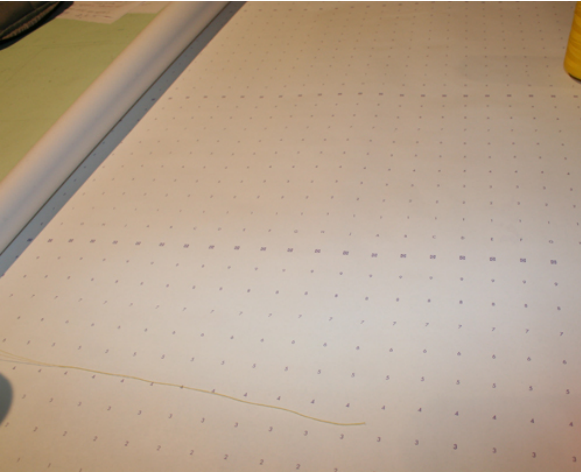
This How To shows you how to properly, easily, flawlessly cut those difficult light and slippery fabrics, like chiffons, linings, and light silks.

Step 1



Iron your fabric.

Step 2



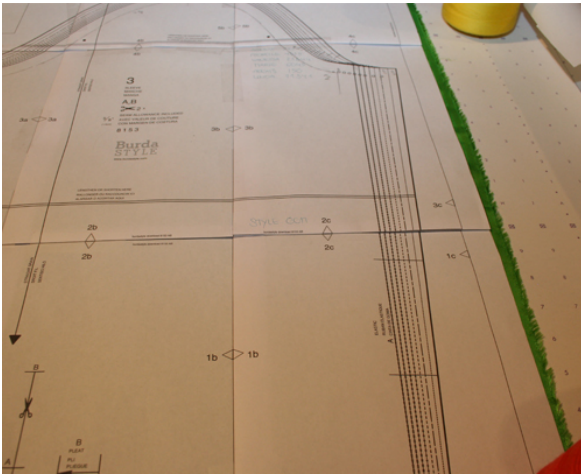
The idea is to sandwich the slippery fabric between two layers to keep it from shifting around during cutting. Craft paper, dot paper, and muslin are all viable options. Lay out the bottom of layer of your chosen sandwich medium. For this how-to, we are using dot paper.

Step 3



Lay the slippery fabric atop bottom layer.

Step 4



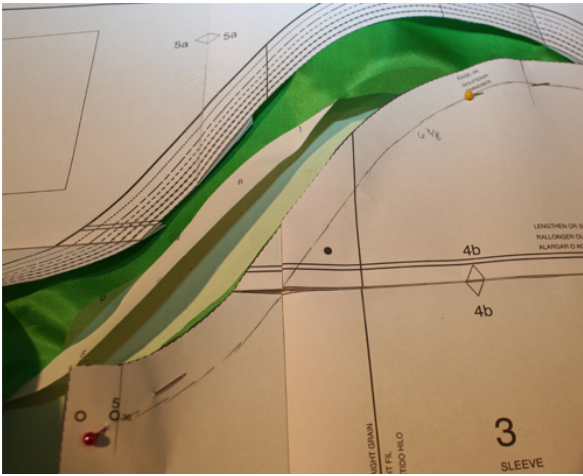
Lay out the next layer. If your pattern piece is already cut out, you'll want another layer of dot paper/tissue/muslin and THEN the pattern piece. If your pattern piece isn't cut, the pattern piece can act as the top layer.

Step 5



Thoroughly and carefully pin through all layers.

Step 6



Carefully cut through all layers. Now that you have your perfectly cut fabric, remember to choose a new needle of the proper size, adjust your machine's tension before you start sewing. Also, leave the pieces pinned between the paper until you are ready to sew, keeping them neat and in order.

BurdaStyle

Cut Slippery Fabric